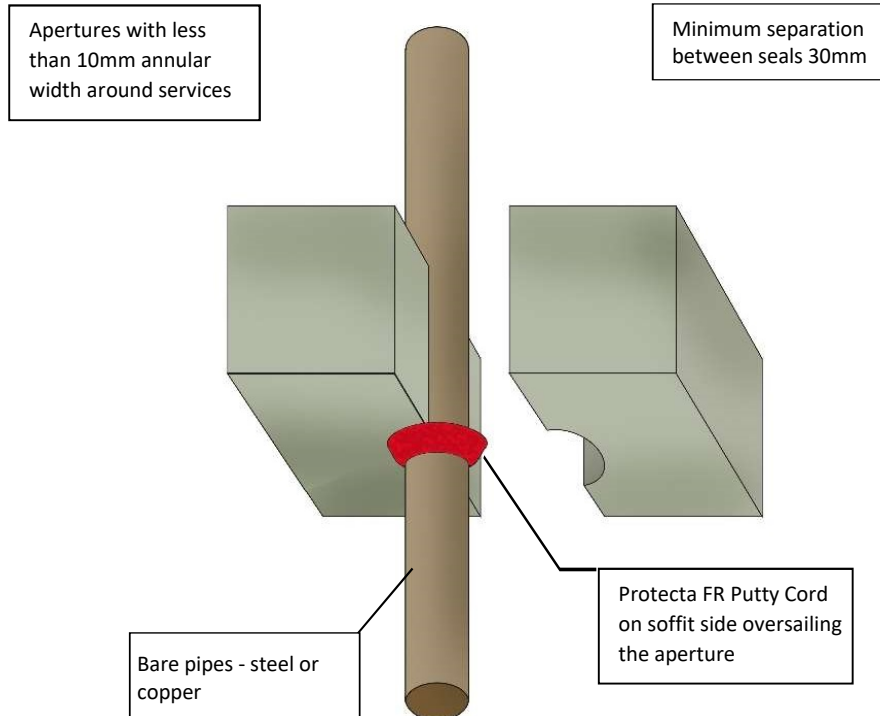


## Protecta FR Putty Cord - Concrete Floor - Bare Pipes

### Installation Instructions

1. Before installing Protecta® FR Putty Cord ensure that the surface of all service penetrations and surrounding construction is wiped clean, dry, free from all loose contaminants, dust, oils and grease.
2. Place the Putty Cord around the services so that it seals the services to the floor all the way round.
3. Press the Putty Cord into the floor and services with your thumbs to form a fillet or V shape joint, ensuring good contact is made all the way round the services and the floor.
4. Pipes may be Steel or Copper. Note that copper systems are AS1530 compliant only for closed systems.
5. The putty cord is designed to be easily fitted around service penetrations where the gap around the services is very small, or there is no gap at all so a conventional fire rated sealant is impossible or difficult to fit due to the required depth and backing material. The putty cords are fitted covering the gap around the services and do not need to fill the gap to any required depth.



Exova EWFA  
 53619700-A.4  
 AS1530.4-2014

As a part of our policy of on-going product development and testing, we reserve the right to modify, alter or change product specifications without giving notice. All information contained in this document is given in good faith and is provided for guidance only. Any drawings provided are for illustrative purposes only. As Polyseam has no control over the methods or competence of installation and of prevailing site conditions, no warranties, expressed or implied, is intended to be given as to the actual performance of the product mentioned or referred to herein and no liability whatsoever will be accepted for any loss, damage or injury arising from the use of the information given.

For all technical details on the products specified please refer to the technical data sheets that can be found on [www.firestopcentre.co.nz](http://www.firestopcentre.co.nz)

Signed and approved:

System/FPA Register ID# FC357

<b>Products</b>	Protecta FR Putty Cord
<b>Application</b>	Fire stopping of bare pipes in rigid floors
<b>Construction</b>	Minimum floor thickness of 100mm** and comprise aerated concrete or concrete with a minimum density of 650kg/m3

### Fire & Sound classification

Steel up to 4mm	FRR -/120/120
Steel up to 30mm	FRR -/120/45
Copper up to 6mm	FRR -/120/90*
Copper up to 12mm	FRR -/120/30*

\* Closed systems only

\*\*FRRs shown are for a 150mm floor. Where the FRR of a thinner floor is less than these ratings then the seal rating must be reduced to the FRR of the floor.



# Protecta®

Polyseam Ltd, 15 St Andrews Road,  
 Huddersfield, West Yorkshire, HD1 6SB

Tel: +44 (0) 148 4421036

Email: [post.uk@polyseam.com](mailto:post.uk@polyseam.com)

Sheet size:	Drawn date & no:
<b>A4</b>	29/5/18

Scale:	Drawn by:
<b>NTS</b>	K.B