



FIRE RATED

CEILING ACCESS PANELS (FRC)



Trafalgar has the most extensive range of access panels available:

Small Sizes | Large Sizes | Custom Sizes
Tileable | Security | Acoustic | Fire Rated
Stainless Steel | Upward Opening | MDF
Touch Latch | Customwood | Service Shaft

taccess.com.au

FIRE RATED

Ceiling Access Panels (FRC)

Product Overview

Trafalgar Fire Rated Ceiling Access Panels are manufactured in Australia and have been designed for use where fire rated protection is a requirement. They feature concealed hinges and provide lockable access to services. Trafalgar FRC panels have been fire tested in fire rated ceilings to Australian Standard AS1530.4 and have attained up to a two hour incipient fire rating for ceilings.



Trafalgar manufacture and supply a two hour fire rated ceiling access panel with concealed hinges and a key lock option.

Trafalgar Fire Rated Ceiling Panels are suitable for **use in one and two hour incipient fire rated ceilings.** When installed they sit flush with the ceiling leaving a neat opening around the perimeter. These panels are secured with an allen key style lock as standard, however a key lock option is also available.

It is easier to design and order standard sizes as these are readily available and competitively priced. However, other sizes can be manufactured to order.

Access panels are typically installed during construction, but they can also be retro-fitted when additional access is required.

Trafalgar specialise in manufacturing large custom size access panels with varying hinge and lock options to meet architectural specifications.

FIRE RATED

Ceiling Access Panels (FRC)

Technical Specifications

PRODUCT DESCRIPTION

FIRE RATING Suitable for use in one and two hour incipient* fire rated ceilings.

Door Panel Paint grade Trafalgar panel incorporating Maxilite high performance fire rated board.

Frame Fully welded, fully primed steel.

Cut-Out Size Cut out a hole in the ceiling the same size as the access panel. For example, a 450x450 access panel will have a 450x450 cut out.

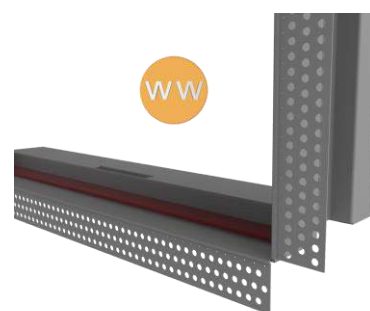
With Trafalgar FRC panels there is no need to line the inside of opening with fire rated plasterboard.

Frame Types Flanged Edge (FE) or Wet Wall (WW)

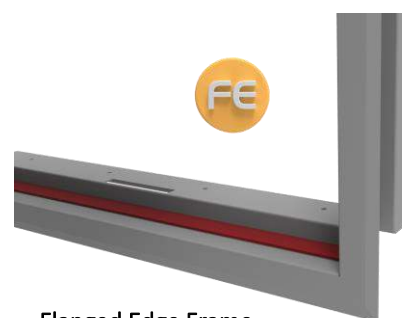
Hinge Fully concealed hinges.

Lock Budget square key lock as standard (Allen key style lock). Key lock options available.

Also Available Trafalgar can custom manufacture to meet your specifications. Trafalgar also supply a comprehensive range of metal, acoustic, customwood, security and speciality access panels.



Wet Wall Frame
(Set bead for plastering in)



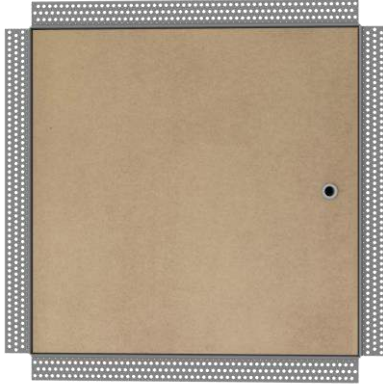
Flanged Edge Frame
(Architrave / picture frame)

* The NCC only requires a minimum of 60 minutes resistance to incipient spread of fire (RISF).

FIRE RATED

Ceiling Access Panels (FRC)

Ordering Information



1 HOUR FRC PANELS

- Feature fully concealed hinges.
- Key lock option available.
- Suitable for use in one hour incipient* fire rated ceilings.
- Easy installation. Additional plasterboard not required in opening.

1 HOUR FIRE RATED CEILING ACCESS PANELS

| Code | Size (mm) | Panel | Use | Frame |
|----------------------------|------------------------------|------------------------------|--|--------------------------------------|
| <u>STOCK SIZES</u> | | | | |
| FRC1-300-FE | 300 x 300 | Maxilite Fire Rated Board | 1 hour (incipient* rated ceilings) | Flanged Edge (Architrave) |
| FRC1-400-FE | 400 x 400 | | | |
| FRC1-450-FE | 450 x 450 | | | |
| FRC1-6040-FE | 600 x 400 | | | |
| FRC1-600-FE | 600 x 600 | | | |
| <u>CUSTOM SIZES</u> | | | | |
| FRC1-Custom-FE | Any size up to 1000 x 600 | | | |
| <u>STOCK SIZES</u> | | | | |
| FRC1-300-WW | 300 x 300 | Maxilite Fire Rated Board | 1 hour (incipient* rated ceilings) | Wet Wall (Set bead to plaster in) |
| FRC1-400-WW | 400 x 400 | | | |
| FRC1-450-WW | 450 x 450 | | | |
| FRC1-6040-WW | 600 x 400 | | | |
| FRC1-600-WW | 600 x 600 | | | |
| <u>CUSTOM SIZES</u> | | | | |
| FRC1-Custom-WW | Any size up to 1000 x 600 | | | |

* The NCC only requires a minimum of 60 minutes resistance to incipient spread of fire (RISF).

Trafalgar Fire Rated Ceiling Access Panels must be installed into ceilings in positions indicated on the architectural drawings, and in accordance with Trafalgar's installation instructions.

FIRE RATED

Ceiling Access Panels (FRC)

Ordering Information



2 HOUR FRC PANELS

- Feature fully concealed hinges.
- Key lock option available.
- Suitable for use in two hour incipient* fire rated ceilings.
- Easy installation. Additional plasterboard not required in opening.

2 HOUR FIRE RATED CEILING ACCESS PANELS

| Code | Size (mm) | Panel | Use | Frame |
|----------------------------|------------------------------|------------------------------|--------------------------------------|--------------------------------------|
| <u>STOCK SIZES</u> | | | | |
| FRC2-300-FE | 300 x 300 | Maxilite Fire Rated Board | 2 hour (incipient* rated ceiling) | Flanged Edge (Architrave) |
| FRC2-400-FE | 400 x 400 | | | |
| FRC2-450-FE | 450 x 450 | | | |
| FRC2-6040-FE | 600 x 400 | | | |
| FRC2-600-FE | 600 x 600 | | | |
| <u>CUSTOM SIZES</u> | | | | |
| FRC2-Custom-FE | Any size up to 1000 x 600 | | | |
| <u>STOCK SIZES</u> | | | | |
| FRC2-300-WW | 300 x 300 | Maxilite Fire Rated Board | 2 hour (incipient* rated ceiling) | Wet Wall (Set bead to plaster in) |
| FRC2-400-WW | 400 x 400 | | | |
| FRC2-450-WW | 450 x 450 | | | |
| FRC2-6040-WW | 600 x 400 | | | |
| FRC2-600-WW | 600 x 600 | | | |
| <u>CUSTOM SIZES</u> | | | | |
| FRC2-Custom-WW | Any size up to 1000 x 600 | | | |

* The NCC only requires a minimum of 60 minutes resistance to incipient spread of fire (RISF).

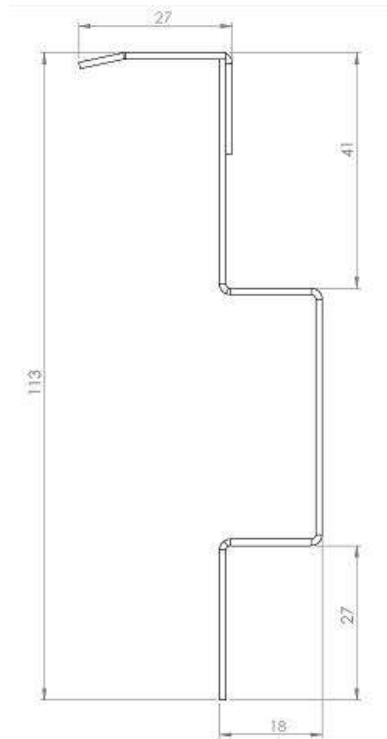
Trafalgar Fire Rated Ceiling Access Panels must be installed into ceilings in positions indicated on the architectural drawings, and in accordance with Trafalgar's installation instructions.

FIRE RATED

Ceiling Access Panels (FRC)

Installation Instructions

FRC - Profile Details



| Access Panel | Use | Construction | Fixings | Fixing Type | Max Fixing Centres |
|--------------|---------|--------------|---------|--------------|--------------------|
| FRC | Ceiling | Plasterboard | 8 gauge | Self-tapping | 150mm |

Installation Instructions

1. Mark out and cut an opening in the ceiling or wall to suit the dimensions of the access panel (eg. 450 x 450), taking into account the position of existing joists. Note that for plasterboard installs, no fire rated plasterboard lining is required.
2. With the hatch of the access panel open, insert the panel into position and fix through the fixing holes in the frame into the surrounding framework, with fixings as detailed in the table above and see drawings below (next page).

NOTE:

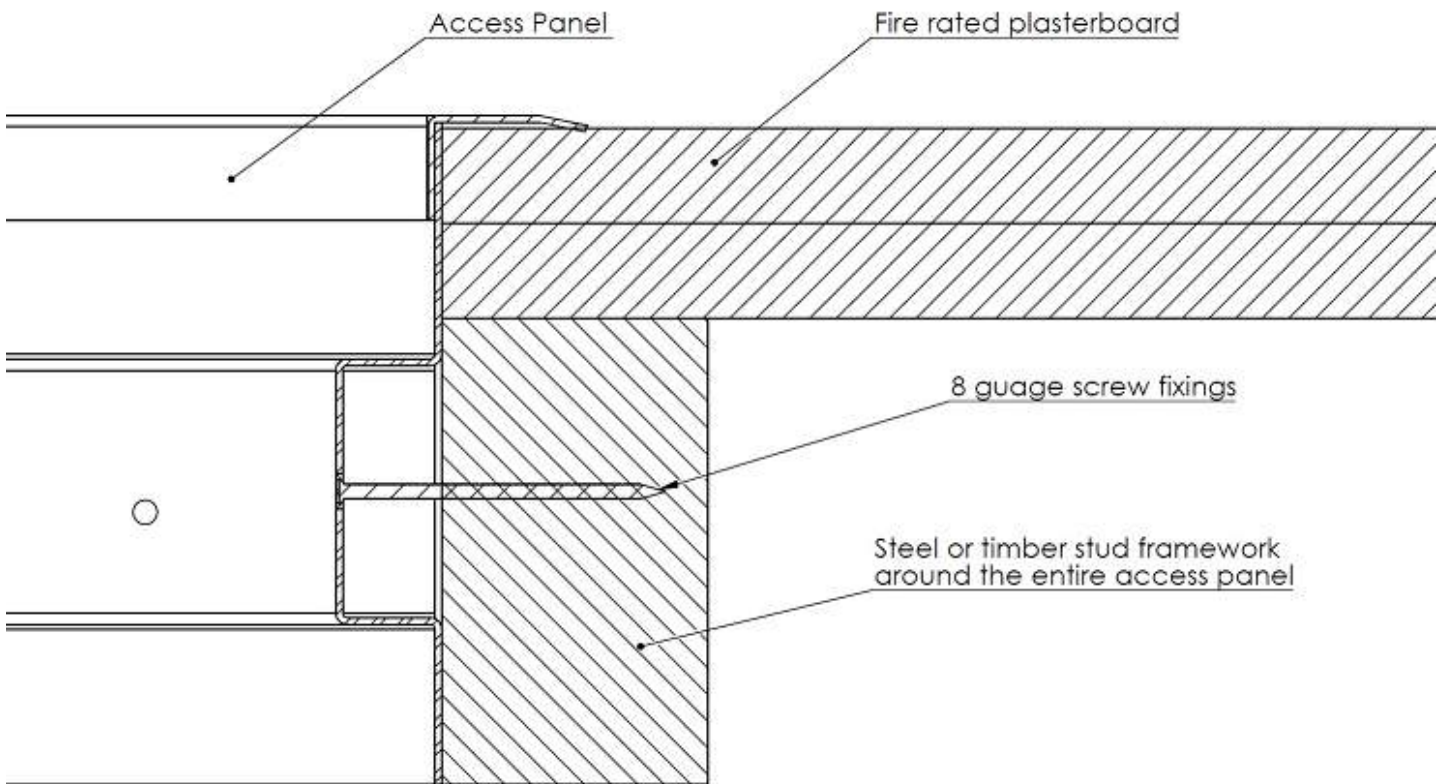
- The installation of Trafalgar Fire Rated Access Panels does not require fire rated sealant.
- Trafalgar Fire Rated Access Panels have been fire tested to the new and more stringent requirements of Australian Standard AS1530.4-2005.

FIRE RATED

Ceiling Access Panels (FRC)

Installation Instructions

FRC - Plasterboard Install



Trafalgar has developed a range of **installation videos** to assist our customers. To view these step by step install videos please go to www.youtube.com and search for **Trafalgar TV**. Subscribe and you will be notified when new videos are uploaded.

Trafalgar reserves the right to change specifications without notice. Please check with your supplier at the time of order. The information contained in this brochure was correct at the time of print. E&OE. Published 01.09.15