

Protecta FR Acrylic - Plasterboard to Timber or Concrete to Timber Gap Seal to 30mm

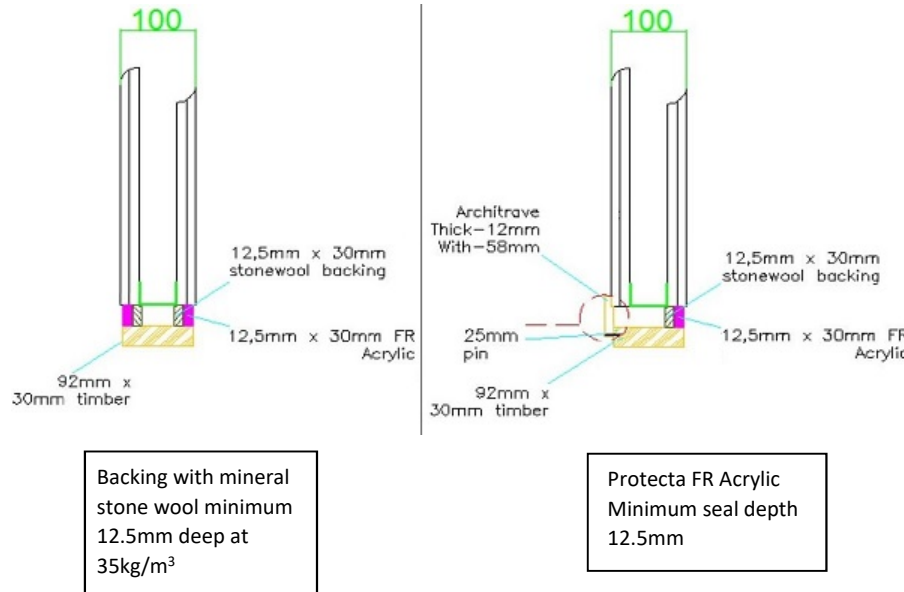
Installation Instructions

- Before installing Protecta® FR Acrylic ensure that the surface of all surrounding construction is free from all loose contaminants, dust and grease.
- Where Protecta® FR Acrylic is to be installed against surfaces that cannot tolerate direct contact; appropriate surface preparation should be made (contact Polyseam for guidance in these cases). For paints sensitive to sealing compounds, priming with a PVA primer is recommended.
- When installing the sealant in gypsum boards, the exposed edges of the board can be wetted with water, or Protecta® FR Acrylic diluted with water to prime the surfaces helping adhesion and preventing excessive joint shrinkage.
- When installing any backing material, cut this slightly oversize and insert into the gap ensuring a tight friction fit. Ensure correct depth is achieved.
- Fill the gap or joint with Protecta® FR Acrylic to the required depth.
- Apply the sealant generously to prevent air bubbles. Finish the bead with a moist spatula, pallet knife or brush.
- Protecta® FR Acrylic can be over-painted with most emulsion or alkyd (gloss) paints.

Horizontal joint between head of wall and soffit of floor above or timber floor below

Horizontal joint between wall and timber beam

Vertical joint between end of wall and timber wall or column



Backing with mineral stone wool minimum 12.5mm deep at 35kg/m³

Protecta FR Acrylic Minimum seal depth 12.5mm

Products	Protecta FR Acrylic Stone wool
Application	Fire rated linear seals in flexible or rigid walls
Construction	Minimum wall thickness of 100 mm comprising steel or timber studs lined on both faces with minimum 2 layers of 12.5 mm thick boards.

Fire & Sound classification	
12.5mm FR Acrylic plus 12.5mm stone wool 35kg/m ³ both sides (or 25mm FR Acrylic)	FRR -/90/60
12.5mm FR Acrylic plus 12.5mm stone wool 35kg/m ³ one side only with architrave	FRR -/60/60
Horizontal or Vertical, Max gap 30mm	
ZERO smoke leakage up to 200Pa	
Sound reduction (seal only)	STC 62

As a part of our policy of on-going product development and testing, we reserve the right to modify, alter or change product specifications without giving notice. All information contained in this document is given in good faith and is provided for guidance only. Any drawings provided are for illustrative purposes only. As Polyseam has no control over the methods or competence of installation and of prevailing site conditions, no warranties, expressed or implied, is intended to be given as to the actual performance of the product mentioned or referred to herein and no liability whatsoever will be accepted for any loss, damage or injury arising from the use of the information given.

For all technical details on the products specified please refer to the technical data sheets that can be found on www.firestopcentre.co.nz

Signed and approved:



Protecta®

Polyseam Ltd, 15 St Andrews Road,
Huddersfield, West Yorkshire, HD1 6SB

Sheet size: A4	Drawn date & no: 8/4/20
Scale: NTS	Drawn by: K.B